

# CTD and pump cast events associated with the US GEOTRACES North Atlantic Transect from the R/V Knorr KN199-04 cruise in the subtropical N. Atlantic during 2010 (U.S. GEOTRACES NAT project)

**Website:** <https://www.bco-dmo.org/dataset/3486>

**Data Type:** Cruise Results

**Version:** 1

**Version Date:** 2011-07-25

## Project

» [U.S. GEOTRACES North Atlantic Transect \(GA03\)](#) (U.S. GEOTRACES NAT)

## Program

» [U.S. GEOTRACES](#) (U.S. GEOTRACES)

Contributors	Affiliation	Role
<a href="#">Jenkins, William J.</a>	Woods Hole Oceanographic Institution (WHOI)	Principal Investigator, Contact
<a href="#">Boyle, Edward A.</a>	Massachusetts Institute of Technology (MIT)	Co-Principal Investigator
<a href="#">Cutter, Gregory A.</a>	Old Dominion University (ODU)	Co-Principal Investigator
<a href="#">Gegg, Stephen R.</a>	Woods Hole Oceanographic Institution (WHOI BCO-DMO)	BCO-DMO Data Manager

## Abstract

CTD and pump cast events associated with the US GEOTRACES North Atlantic Transect from the R/V Knorr KN199-04 cruise in the subtropical N. Atlantic during 2010 (U.S. GEOTRACES NAT project)

---

## Table of Contents

- [Coverage](#)
  - [Dataset Description](#)
    - [Methods & Sampling](#)
    - [Data Processing Description](#)
  - [Data Files](#)
  - [Parameters](#)
  - [Deployments](#)
  - [Project Information](#)
  - [Program Information](#)
  - [Funding](#)
- 

## Coverage

**Spatial Extent:** N:38.34079 E:-9.65956 S:17.34886 W:-24.49982

**Temporal Extent:** 2010-10-15 - 2010-11-03

---

## Dataset Description

Table of CTD and PUMP Cast Events for KN199-04

Summary of activity at each cast event - station, cast, event, type, date, time, Start, Mid, End, etc

**NOTE:** No Cast Events maintained for KN199-05.

## Methods & Sampling

(none)

## Data Processing Description

### BCO-DMO Processing Notes

- Generated from original .html file "gt10\_EventsTable.html" contributed by Bill Jenkins
- Lat/Lon converted from degs, decimal minutes to decimal degrees
- Lon values signed negative for West
- date reformatted to YYYYMMDD
- time reformatted to HHMM
- "nd" (no data) value inserted in blank cells
- Commas in text fields converted to semicolons
- Parameter names modified to conform to BCO-DMO conventions
- Original Event for Cast 6/1 of Event 2026 corrected to Event 2106 after checking event log
- Original Event for Cast 5/5 of Event 2082 corrected to Event 2092 after checking event log (22July2011/srg)
- Added Cast 995/0 Event 2003 after working with scanned cast log sheets (25July2011/srg)
- "GT\_Ev#" Parameter in original table changed to "Event" for consistency with Event Log
- Type "SIOR" changed to "ODF" for consistency with other data
- "Event" Parameter in original table changed to "activity" to preserve unique parameter names

[ [table of contents](#) | [back to top](#) ]

---

## Data Files

File
<b>CTD_and_Pump_CastEvents_GT10.csv</b> (Comma Separated Values (.csv), 34.63 KB) MD5:040d23c9e618d13952ad054388fcbced
Primary data file for dataset ID 3486

[ [table of contents](#) | [back to top](#) ]

---

## Parameters

Parameter	Description	Units
cast	Cast Id	text
type	Cast Type	text
event_GEOTRC	Unique identifying number for US GEOTRACES sampling events; ranges from 2001 to 2225 for KN199-04 events and from 3001 to 3282 for KN204-01 events. Originally submitted as 'Event', this parameter name has been changed to conform to BCO-DMO's GEOTRACES naming conventions.	integer
activity	Activity during cast	text
date	Date (GMT) in the format YYYYMMDD	unitless
time	time (GMT) in the format HHMMSS	unitless
lat	Latitude (South is negative)	decimal degrees
lon	Longitude (West is negative)	decimal degrees
speed	Speed	knots
course	Course	degrees
depth	Depth	meters
DAB	Depth Above Bottom	meters
wire_out	Wire Out	meters
press_max	Max Pressure. (Name changed from 'Max_P'.)	decibars
duration	Event Duration in the format HH:MM:SS	unitless
ISO_DateTime_UTC	Date/Time formatted to ISO 8601 standard. T indicates start of time string; Z indicates UTC. Calculated using 'date' and 'time' parameters as input.	yyyy-MM-dd'T'HH:mm:ss.SS'Z'

[ [table of contents](#) | [back to top](#) ]

## Deployments

### KN199-04

<b>Website</b>	<a href="https://www.bco-dmo.org/deployment/58066">https://www.bco-dmo.org/deployment/58066</a>
<b>Platform</b>	R/V Knorr
<b>Report</b>	<a href="http://bcodata.whoi.edu/US_GEOTRACES/AtlanticSection/Cruise_Report_for_Knorr_199_Final_v3.pdf">http://bcodata.whoi.edu/US_GEOTRACES/AtlanticSection/Cruise_Report_for_Knorr_199_Final_v3.pdf</a>
<b>Start Date</b>	2010-10-15
<b>End Date</b>	2010-11-04
<b>Description</b>	<p>This cruise constitutes the first survey section as part of the U.S. participation in an international program named GEOTRACES. Funding: NSF OCE award 0926423 Science Objectives: To obtain state of the art trace metal and isotope measurements on a suite of samples taken on a mid-latitude zonal transect of the North Atlantic. In particular, sampling targeted the oxygen minimum zone extending off the west African coast near Mauritania, the TAG hydrothermal field, and the western boundary current system along Line W. For additional information, please refer to the GEOTRACES program Web site (<a href="https://www.geotraces.org/">https://www.geotraces.org/</a>) for overall program objectives and a summary of properties measured. Science Activities include seawater sampling via GoFLO and Niskin carousels, in situ pumping (and filtration), CTDO2 and transmissometer sensors, underway pumped sampling of surface waters, and collection of aerosols and rain. Hydrography, CTD and nutrient measurements were supported by the Ocean Data Facility (J. Swift) at Scripps Institution of Oceanography and funded through NSF Facilities. They provided an additional CTD rosette system along with nephelometer and LADCP. A trace metal clean Go-Flo Rosette and winch were provided by the group at Old Dominion University (G. Cutter) along with a towed underway pumping system. Additional cruise information is available from the Rolling Deck to Repository (R2R): <a href="https://www.rvdata.us/search/cruise/KN199-04">https://www.rvdata.us/search/cruise/KN199-04</a> Other Relevant Links: List of cruise participants: [ PDF ] Cruise track: JPEG image (from Woods Hole Oceanographic Institution, vessel operator) ADCP data are available from the Currents ADCP group at the University of Hawaii: KN199-04 ADCP</p>

[ [table of contents](#) | [back to top](#) ]

## Project Information

### U.S. GEOTRACES North Atlantic Transect (GA03) (U.S. GEOTRACES NAT)

**Website:** <https://www.geotraces.org/>

**Coverage:** Subtropical western and eastern North Atlantic Ocean (GA03)

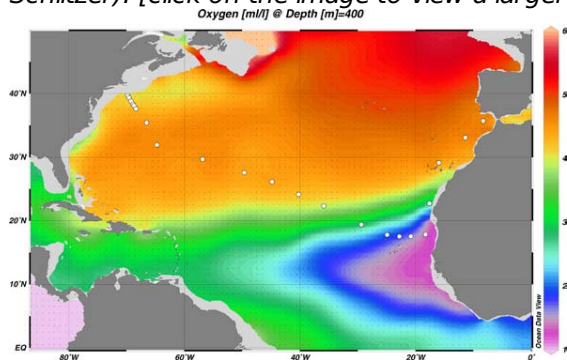
*Much of this text appeared in an article published in OCB News, October 2008, by the OCB Project Office.*

The first U.S. GEOTRACES Atlantic Section will be specifically centered around a sampling cruise to be carried out in the North Atlantic in 2010. Ed Boyle (MIT) and Bill Jenkins (WHOI) organized a three-day planning workshop that was held September 22-24, 2008 at the Woods Hole Oceanographic Institution. The main goal of the workshop, sponsored by the National Science Foundation and the U.S. GEOTRACES Scientific Steering Committee, was to design the implementation plan for the first U.S. GEOTRACES Atlantic Section. The primary cruise design motivation was to improve knowledge of the sources, sinks and internal cycling of Trace Elements and their Isotopes (TEIs) by studying their distributions along a section in the North Atlantic (Figure 1). The North Atlantic has the full suite of processes that affect TEIs, including strong meridional advection, boundary scavenging and source effects, aeolian deposition, and the salty Mediterranean Outflow. The North Atlantic is particularly important as it lies at the "origin" of the global Meridional Overturning Circulation.

It is well understood that many trace metals play important roles in biogeochemical processes and the carbon cycle, yet very little is known about their large-scale distributions and the regional scale processes that affect them. Recent advances in sampling and analytical techniques, along with advances in our understanding of their roles in enzymatic and catalytic processes in the open ocean provide a natural opportunity to make substantial advances in our understanding of these important elements. Moreover, we are motivated by the prospect of global change and the need to understand the present and future workings of the ocean's biogeochemistry. The GEOTRACES strategy is to measure a broad suite of TEIs to constrain the critical biogeochemical processes that influence their distributions. In addition to these "exotic" substances, more traditional properties, including

macronutrients (at micromolar and nanomolar levels), CTD, bio-optical parameters, and carbon system characteristics will be measured. The cruise starts at Line W, a repeat hydrographic section southeast of Cape Cod, extends to Bermuda and subsequently through the North Atlantic oligotrophic subtropical gyre, then transects into the African coast in the northern limb of the coastal upwelling region. From there, the cruise goes northward into the Mediterranean outflow. The station locations shown on the map are for the "fulldepth TEI" stations, and constitute approximately half of the stations to be ultimately occupied.

Figure 1. The proposed 2010 Atlantic GEOTRACES cruise track plotted on dissolved oxygen at 400 m depth. Data from the World Ocean Atlas (Levitus et al., 2005) were plotted using Ocean Data View (courtesy Reiner Schlitzer). [click on the image to view a larger version]

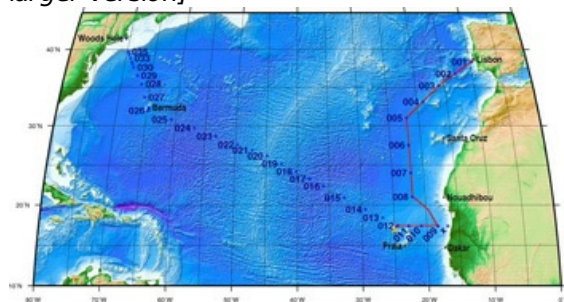


Hydrography, CTD and nutrient measurements will be supported by the Ocean Data Facility (J. Swift) at Scripps Institution of Oceanography and funded through NSF Facilities. They will be providing an additional CTD rosette system along with nephelometer and LADCP. A trace metal clean Go-Flo Rosette and winch will be provided by the group at Old Dominion University (G. Cutter) along with a towed underway pumping system.

The North Atlantic Transect cruise began in 2010 with KN199 leg 4 (station sampling) and leg 5 (underway sampling only) (Figure 2).

[KN199-04 Cruise Report \(PDF\)](#)

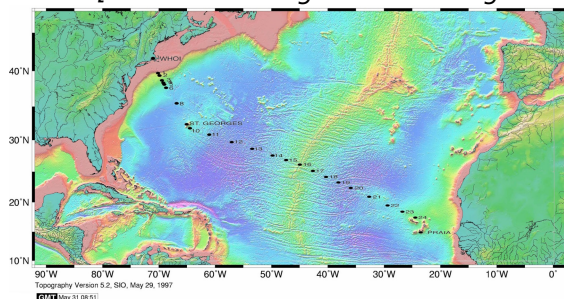
Figure 2. The red line shows the cruise track for the first leg of the US Geotraces North Atlantic Transect on the R/V Knorr in October 2010. The rest of the stations (beginning with 13) will be completed in October-December 2011 on the R/V Knorr (courtesy of Bill Jenkins, Chief Scientist, GNAT first leg). [click on the image to view a larger version]



The section completion effort resumed again in November 2011 with KN204-01A,B (Figure 3).

[KN204-01A,B Cruise Report \(PDF\)](#)

Figure 3. Station locations occupied on the US Geotraces North Atlantic Transect on the R/V Knorr in November 2011. [click on the image to view a larger version]



Data from the North Atlantic Transect cruises are available under the Datasets heading below, and consensus values for the SAFe and North Atlantic GEOTRACES Reference Seawater Samples are available from the GEOTRACES Program Office: [Standards and Reference Materials](#)

**ADCP data** are available from the Currents ADCP group at the University of Hawaii at the links below:

- [KN199-04](#) (leg 1 of 2010 cruise; Lisbon to Cape Verde)
- [KN199-05](#) (leg 2 of 2010 cruise; Cape Verde to Charleston, NC)
- [KN204-01A](#) (part 1 of 2011 cruise; Woods Hole, MA to Bermuda)
- [KN204-01B](#) (part 2 of 2011 cruise; Bermuda to Cape Verde)

[ [table of contents](#) | [back to top](#) ]

---

## Program Information

### U.S. GEOTRACES (U.S. GEOTRACES)

**Website:** <http://www.geotraces.org/>

**Coverage:** Global

**GEOTRACES** is a [SCOR](#) sponsored program; and funding for program infrastructure development is provided by the [U.S. National Science Foundation](#).

GEOTRACES gained momentum following a special symposium, S02: Biogeochemical cycling of trace elements and isotopes in the ocean and applications to constrain contemporary marine processes (GEOSECS II), at a 2003 Goldschmidt meeting convened in Japan. The GEOSECS II acronym referred to the Geochemical Ocean Section Studies To determine full water column distributions of selected trace elements and isotopes, including their concentration, chemical speciation, and physical form, along a sufficient number of sections in each ocean basin to establish the principal relationships between these distributions and with more traditional hydrographic parameters;

- \* To evaluate the sources, sinks, and internal cycling of these species and thereby characterize more completely the physical, chemical and biological processes regulating their distributions, and the sensitivity of these processes to global change; and

- \* To understand the processes that control the concentrations of geochemical species used for proxies of the past environment, both in the water column and in the substrates that reflect the water column.

GEOTRACES will be global in scope, consisting of ocean sections complemented by regional process studies. Sections and process studies will combine fieldwork, laboratory experiments and modelling. Beyond realizing the scientific objectives identified above, a natural outcome of this work will be to build a community of marine scientists who understand the processes regulating trace element cycles sufficiently well to exploit this knowledge reliably in future interdisciplinary studies.

Expand "Projects" below for information about and data resulting from individual US GEOTRACES research projects.

[ [table of contents](#) | [back to top](#) ]

---

## Funding

Funding Source	Award
<a href="#">NSF Division of Ocean Sciences (NSF OCE)</a>	<a href="#">OCE-0926423</a>
<a href="#">NSF Division of Ocean Sciences (NSF OCE)</a>	<a href="#">OCE-0926092</a>

[ [table of contents](#) | [back to top](#) ]