

# Water-column total Thorium-234 and Uranium-238 from R/V Knorr cruises KN199-04 and KN204-01 in the Subtropical northern Atlantic Ocean from 2010-2011 (U.S. GEOTRACES NAT project)

**Website:** <https://www.bco-dmo.org/dataset/3836>

**Data Type:** Cruise Results

**Version:** 2

**Version Date:** 2013-03-25

## Project

» [U.S. GEOTRACES North Atlantic Transect \(GA03\)](#) (U.S. GEOTRACES NAT)

## Program

» [U.S. GEOTRACES](#) (U.S. GEOTRACES)

Contributors	Affiliation	Role
<a href="#">Buesseler, Kenneth O.</a>	Woods Hole Oceanographic Institution (WHOI)	Principal Investigator
<a href="#">Owens, Stephanie</a>	Woods Hole Oceanographic Institution (WHOI)	Contact
<a href="#">Rauch, Shannon</a>	Woods Hole Oceanographic Institution (WHOI BCO-DMO)	BCO-DMO Data Manager

## Abstract

Water-column total Th-234 with 4 L method and U-238 from U-salinity relationship from the 2010 and 2011 U.S. GEOTRACES cruises.

---

## Table of Contents

- [Coverage](#)
  - [Dataset Description](#)
    - [Methods & Sampling](#)
    - [Data Processing Description](#)
  - [Data Files](#)
  - [Related Publications](#)
  - [Parameters](#)
  - [Instruments](#)
  - [Deployments](#)
  - [Project Information](#)
  - [Program Information](#)
  - [Funding](#)
- 

## Coverage

**Spatial Extent:** N:39.695 E:-9.663 S:17.35 W:-69.808

**Temporal Extent:** 2010-10-16 - 2011-12-09

---

## Dataset Description

Water-column total Th-234 with 4 L method and U-238 from U-salinity relationship from the 2010 and 2011 U.S. GEOTRACES cruises.

## Methods & Sampling

### Uranium-238

Value and uncertainty from equation derived in Owens et al. (2011)

$$U-238 \text{ (dpm/L)} = (\text{Salinity} * 0.0786) - 0.315$$

Salinity was measured onboard the ship by the Scripps Ocean Data Facility.

### **Thorium-234**

Determined by the widely-adopted 4 L method. Shallow (< 1000 m) samples were collected from the SIO ODF Rosette and deep samples (>1000 m) were collected from Niskin bottles hung above in situ pumps. Data are decay corrected to the mid-point time between when bottles 1 and 12 were fired for shallow casts and when the messenger was dropped for deep cast. All surface samples were collected using a deck-mounted pump (denoted as bottle 13). All data have been recovery-corrected using the Th-230/Th-229 recovery method (see references below) to account for any loss of sample material during processing. All samples were analyzed using RISO Laboratory Anti-coincidence Beta Counters, using a helium/1% butane mixture. Overall method efficiency was determined by minimizing the percent difference between mean U-238 and Th-234 values for samples from >1000 m to > 1000 m from the bottom (44.5 % for KN 199-4 and 46.4 % for KN 204-01a and KN 204-01b).

### **Data Processing Description**

Data were flagged with quality indicators: 1 = Good; 2 = Questionable; 3 = Bad.

BCO-DMO made the following modifications:

- Parameter names have been modified to conform with BCO-DMO naming conventions.
- cruise\_part was separated from the official cruise ID for cruise KN204-01.
- Added Cast\_ISO\_DateTime\_UTC from the original cast dates and times.

### **Additional GEOTRACES Processing:**

After the data were submitted to the International Data Management Office, BODC, the office noticed that important identifying information was missing in many datasets. With the agreement of BODC and the US GEOTRACES lead PIs, BCO-DMO added standard US GEOTRACES information, such as the US GEOTRACES event number, to each submitted dataset lacking this information. To accomplish this, BCO-DMO compiled a 'master' dataset composed of the following parameters: station\_GEOTRC, cast\_GEOTRC (bottle and pump data only), event\_GEOTRC, sample\_GEOTRC, sample\_bottle\_GEOTRC (bottle data only), bottle\_GEOTRC (bottle data only), depth\_GEOTRC\_CTD (bottle data only), depth\_GEOTRC\_CTD\_rounded (bottle data only), BTL\_ISO\_DateTime\_UTC (bottle data only), and GeoFish\_id (GeoFish data only). This added information will facilitate subsequent analysis and inter comparison of the datasets.

Bottle parameters in the master file were taken from the GT-C\_Bottle\_GT10, GT-C\_Bottle\_GT11, ODF\_Bottle\_GT10, and ODF\_Bottle\_GT11 datasets. Non-bottle parameters, including those from GeoFish tows, Aerosol sampling, and McLane Pumps, were taken from the Event\_Log\_GT10 and Event\_Log\_GT11 datasets. McLane pump cast numbers missing in event logs were taken from the Particulate Th-234 dataset submitted by Ken Buesseler.

A standardized BCO-DMO method (called "join") was then used to merge the missing parameters to each US GEOTRACES dataset, most often by matching on sample\_GEOTRC or on some unique combination of other parameters.

If the master parameters were included in the original data file and the values did not differ from the master file, the original data columns were retained and the names of the parameters were changed from the PI-submitted names to the standardized master names. If there were differences between the PI-supplied parameter values and those in the master file, both columns were retained. If the original data submission included all of the master parameters, no additional columns were added, but parameter names were modified to match the naming conventions of the master file.

See the dataset parameters documentation for a description of which parameters were supplied by the PI and which were added via the join method.

[ [table of contents](#) | [back to top](#) ]

---

### **Data Files**

<b>File</b>
<b>Th234_total_and_U238_GT10-11_joined.csv</b> (Comma Separated Values (.csv), 88.00 KB) MD5:bb13cc18fb131f06999961f0bc24e2f3
Primary data file for dataset ID 3836

[ [table of contents](#) | [back to top](#) ]

## Related Publications

Maiti, K., Buesseler, K. O., Pike, S. M., Benitez-Nelson, C., Cai, P., Chen, W., ... Xu, C. (2012). Intercalibration studies of short-lived thorium-234 in the water column and marine particles. *Limnology and Oceanography: Methods*, 10(9), 631–644. doi:[10.4319/lom.2012.10.631](https://doi.org/10.4319/lom.2012.10.631)  
*Methods*

Owens, S. A., Buesseler, K. O., & Sims, K. W. W. (2011). Re-evaluating the 238U-salinity relationship in seawater: Implications for the 238U–234Th disequilibrium method. *Marine Chemistry*, 127(1-4), 31–39. doi:[10.1016/j.marchem.2011.07.005](https://doi.org/10.1016/j.marchem.2011.07.005)  
*Results*

[ [table of contents](#) | [back to top](#) ]

## Parameters

Parameter	Description	Units
cruise_id	Official cruise identifier e.g. KN199-04 = R/V Knorr cruise number 199-04.	text
cruise_part	Part of cruise. For KN204-01: A = 11/6/2011 to 11/18/2011 (Woods Hole to Bermuda) B = 11/19/2011 to 12/11/2011 (Bermuda to Praia, Cabo Verde)	text
station_GEOTRC	GEOTRACES station number; ranges from 1 through 12 for KN199-04 and 1 through 24 for KN204-01. Stations 7 and 9 were skipped on KN204-01. PI-supplied values were identical to those in the intermediate US GEOTRACES master file. Originally submitted as 'Station', this parameter name has been changed to conform to BCO-DMO's GEOTRACES naming conventions.	unitless
lat	Latitude. Positive = North.	decimal degrees
lon	Longitude. Negative = West.	decimal degrees
event	GEOTRACES event number; provided in original data submission.	unitless
cast_GEOTRC	Cast identifier, numbered consecutively within a station. PI-supplied values were identical to those in the intermediate US GEOTRACES master file. Originally submitted as 'Cast', this parameter name has been changed to conform to BCO-DMO's GEOTRACES naming conventions.	unitless
month_gmt	2-digit month of year (GMT). in the format mm (01 to 12)	unitless
day_gmt	2-digit day of month (GMT). in the format dd (01 to 31)	unitless
year	4-digit year. in the format YYYY	unitless
time_gmt	Time (GMT); 24-hour clock. in the format HHMM	unitless
bottle	Bottle number; provided in original data submission.	unitless

sample_GEOTRC	Unique identifying number for US GEOTRACES samples; ranges from 5033 to 6078 for KN199-04 and from 6112 to 8148 for KN204-01. PI-supplied values were identical to those in the intermediate US GEOTRACES master file. Originally submitted as 'Geotraces #', this parameter name has been changed to conform to BCO-DMO's GEOTRACES naming conventions.	unitless
depth_n	Nominal sample depth.	meters
depth	Actual sample depth; provided in original data submission.	meters
U238	Total Uranium-238 concentration. Includes dissolved + particulate (though particulate fraction is very small).	dpm/Liter
U238_unc	U238 uncertainty. Derived from the uncertainty in the relationship in Owens et al. (2011).	dpm/Liter
Th234_tot	Thorium-234 concentration.	dpm/Liter
Th_234_tot_unc	Th234 uncertainty. Derived from counting statistics.	dpm/Liter
q_flag	Quality flag: 1 = Good 2 = Questionable 3 = Bad	unitless
depth_GEOTRC_CTD	Observation/sample depth in meters, calculated from CTD pressure. Values were added from the intermediate US GEOTRACES master file (see Processing Description).	meters
event_GEOTRC	Unique identifying number for US GEOTRACES sampling events; ranges from 2001 to 2225 for KN199-04 events and from 3001 to 3282 for KN204-01 events. Values were added from the intermediate US GEOTRACES master file (see Processing Description).	unitless
sample_bottle_GEOTRC	Unique identification numbers given to samples taken from bottles; ranges from 1 to 24; often used synonymously with bottle number. Values were added from the intermediate US GEOTRACES master file (see Processing Description).	unitless
bottle_GEOTRC	Alphanumeric characters identifying bottle type (e.g., NIS representing Niskin and GF representing GOFLO) and position on a CTD rosette. Values were added from the intermediate US GEOTRACES master file (see Processing Description).	unitless
Cast_ISO_DateTime_UTC	Cast date/time (UTC) formatted to ISO8601 standard. T indicates start of time string; Z indicates UTC. Calculated from original date and time fields.	yyyy-MM-dd'T'HH:mm:ss.SS'Z'
BTL_ISO_DateTime_UTC	Date and time (UTC) variable recorded at the bottle sampling time in ISO compliant format. Values were added from the intermediate US GEOTRACES master file (see Processing Description). This standard is based on ISO 8601:2004(E) and takes on the following form: 2009-08-30T14:05:00[.xx]Z (UTC time)	unitless

[ [table of contents](#) | [back to top](#) ]

---

## Instruments

<b>Dataset-specific Instrument Name</b>	Niskin bottle
<b>Generic Instrument Name</b>	Niskin bottle
<b>Dataset-specific Description</b>	Shallow samples for Th-234 were taken using the SIO ODF Rosette (12 30-Liter Niskin bottles). Deep samples were taken using Niskin bottles hung above in situ pumps.
<b>Generic Instrument Description</b>	A Niskin bottle (a next generation water sampler based on the Nansen bottle) is a cylindrical, non-metallic water collection device with stoppers at both ends. The bottles can be attached individually on a hydrowire or deployed in 12, 24, or 36 bottle Rosette systems mounted on a frame and combined with a CTD. Niskin bottles are used to collect discrete water samples for a range of measurements including pigments, nutrients, plankton, etc.

<b>Dataset-specific Instrument Name</b>	Riso Laboratory Anti-coincidence Beta Counters
<b>Generic Instrument Name</b>	Riso Laboratory Anti-coincidence Beta Counters
<b>Dataset-specific Description</b>	Th-234 samples were analyzed using a Riso Anti-coincidence Beta Counter using a helium/1% butane mixture.
<b>Generic Instrument Description</b>	Low-level beta detectors manufactured by Riso (now Nutech) in Denmark. These instruments accept samples that can be mounted on a 25mm filter holder. These detectors have very low backgrounds, 0.17 counts per minute, and can have counting efficiencies as high as 55%.

[ [table of contents](#) | [back to top](#) ]

## Deployments

**KN199-04**

<b>Website</b>	<a href="https://www.bco-dmo.org/deployment/58066">https://www.bco-dmo.org/deployment/58066</a>
<b>Platform</b>	R/V Knorr
<b>Report</b>	<a href="http://bcodata.whoi.edu/US_GEOTRACES/AtlanticSection/Cruise_Report_for_Knorr_199_Final_v3.pdf">http://bcodata.whoi.edu/US_GEOTRACES/AtlanticSection/Cruise_Report_for_Knorr_199_Final_v3.pdf</a>
<b>Start Date</b>	2010-10-15
<b>End Date</b>	2010-11-04
<b>Description</b>	<p>This cruise constitutes the first survey section as part of the U.S. participation in an international program named GEOTRACES. Funding: NSF OCE award 0926423 Science Objectives: To obtain state of the art trace metal and isotope measurements on a suite of samples taken on a mid-latitude zonal transect of the North Atlantic. In particular, sampling targeted the oxygen minimum zone extending off the west African coast near Mauritania, the TAG hydrothermal field, and the western boundary current system along Line W. For additional information, please refer to the GEOTRACES program Web site (<a href="https://www.geotraces.org/">https://www.geotraces.org/</a>) for overall program objectives and a summary of properties measured. Science Activities include seawater sampling via GoFLO and Niskin carousels, in situ pumping (and filtration), CTDO2 and transmissometer sensors, underway pumped sampling of surface waters, and collection of aerosols and rain. Hydrography, CTD and nutrient measurements were supported by the Ocean Data Facility (J. Swift) at Scripps Institution of Oceanography and funded through NSF Facilities. They provided an additional CTD rosette system along with nephelometer and LADCP. A trace metal clean Go-Flo Rosette and winch were provided by the group at Old Dominion University (G. Cutter) along with a towed underway pumping system. Additional cruise information is available from the Rolling Deck to Repository (R2R): <a href="https://www.rvdata.us/search/cruise/KN199-04">https://www.rvdata.us/search/cruise/KN199-04</a> Other Relevant Links: List of cruise participants: [ PDF ] Cruise track: JPEG image (from Woods Hole Oceanographic Institution, vessel operator) ADCP data are available from the Currents ADCP group at the University of Hawaii: KN199-04 ADCP</p>

**KN204-01**

<b>Website</b>	<a href="https://www.bco-dmo.org/deployment/58786">https://www.bco-dmo.org/deployment/58786</a>
<b>Platform</b>	R/V Knorr
<b>Report</b>	<a href="http://bcodata.whoi.edu/US_GEOTRACES/AtlanticSection/STS_Prelim_GT11_Doc.pdf">http://bcodata.whoi.edu/US_GEOTRACES/AtlanticSection/STS_Prelim_GT11_Doc.pdf</a>
<b>Start Date</b>	2011-11-06
<b>End Date</b>	2011-12-11
<b>Description</b>	<p>The US GEOTRACES North Atlantic cruise aboard the R/V Knorr completed the section between Lisbon and Woods Hole that began in October 2010 but was rescheduled for November-December 2011. The R/V Knorr made a brief stop in Bermuda to exchange samples and personnel before continuing across the basin. Scientists disembarked in Praia, Cape Verde, on 11 December. The cruise was identified as KN204-01A (first part before Bermuda) and KN204-01B (after the Bermuda stop). However, the official deployment name for this cruise is KN204-01 and includes both part A and B. Science activities included: ODF 30 liter rosette CTD casts, ODU Trace metal rosette CTD casts, McLane particulate pump casts, underway sampling with towed fish and sampling from the shipboard "uncontaminated" flow-through system. Full depth stations are shown in the accompanying figure (see below). Additional stations to sample for selected trace metals to a depth of 1000 m are not shown. Standard stations are shown in red (as are the ports) and "super" stations, with extra casts to provide large-volume samples for selected parameters, are shown in green. Station spacing is concentrated along the western margin to evaluate the transport of trace elements and isotopes by western boundary currents. Stations across the gyre will allow scientists to examine trace element supply by Saharan dust, while also contrasting trace element and isotope distributions in the oligotrophic gyre with conditions near biologically productive ocean margins, both in the west, to be sampled now, and within the eastern boundary upwelling system off Mauritania, sampled last year. Funding: The cruise was funded by NSF OCE awards 0926204, 0926433 and 0926659. Additional cruise information is available from the Rolling Deck to Repository (R2R): <a href="https://www.rvdata.us/search/cruise/KN204-01">https://www.rvdata.us/search/cruise/KN204-01</a> Other Relevant Links: ADCP data are available from the Currents ADCP group at the University of Hawaii at the links below: KN204-01A (part 1 of 2011 cruise; Woods Hole, MA to Bermuda) KN204-01B (part 2 of 2011 cruise; Bermuda to Cape Verde)</p>

[ [table of contents](#) | [back to top](#) ]

## Project Information

### U.S. GEOTRACES North Atlantic Transect (GA03) (U.S. GEOTRACES NAT)

**Website:** <https://www.geotraces.org/>

**Coverage:** Subtropical western and eastern North Atlantic Ocean (GA03)

*Much of this text appeared in an article published in OCB News, October 2008, by the OCB Project Office.*

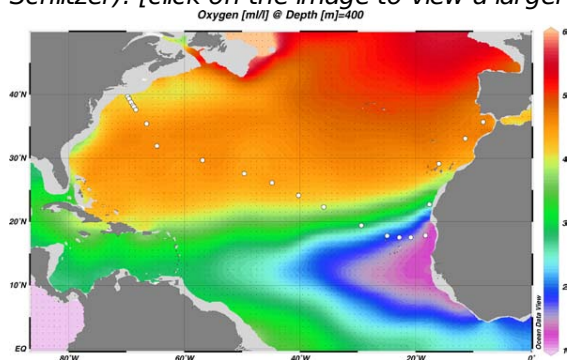
The first U.S. GEOTRACES Atlantic Section will be specifically centered around a sampling cruise to be carried out in the North Atlantic in 2010. Ed Boyle (MIT) and Bill Jenkins (WHOI) organized a three-day planning workshop that was held September 22-24, 2008 at the Woods Hole Oceanographic Institution. The main goal of the workshop, sponsored by the National Science Foundation and the U.S. GEOTRACES Scientific Steering Committee, was to design the implementation plan for the first U.S. GEOTRACES Atlantic Section. The primary cruise design motivation was to improve knowledge of the sources, sinks and internal cycling of Trace Elements and their Isotopes (TEIs) by studying their distributions along a section in the North Atlantic (Figure 1). The North Atlantic has the full suite of processes that affect TEIs, including strong meridional advection, boundary scavenging and source effects, aeolian deposition, and the salty Mediterranean Outflow. The North Atlantic is particularly important as it lies at the "origin" of the global Meridional Overturning Circulation.

It is well understood that many trace metals play important roles in biogeochemical processes and the carbon cycle, yet very little is known about their large-scale distributions and the regional scale processes that affect them. Recent advances in sampling and analytical techniques, along with advances in our understanding of their



roles in enzymatic and catalytic processes in the open ocean provide a natural opportunity to make substantial advances in our understanding of these important elements. Moreover, we are motivated by the prospect of global change and the need to understand the present and future workings of the ocean's biogeochemistry. The GEOTRACES strategy is to measure a broad suite of TEIs to constrain the critical biogeochemical processes that influence their distributions. In addition to these "exotic" substances, more traditional properties, including macronutrients (at micromolar and nanomolar levels), CTD, bio-optical parameters, and carbon system characteristics will be measured. The cruise starts at Line W, a repeat hydrographic section southeast of Cape Cod, extends to Bermuda and subsequently through the North Atlantic oligotrophic subtropical gyre, then transects into the African coast in the northern limb of the coastal upwelling region. From there, the cruise goes northward into the Mediterranean outflow. The station locations shown on the map are for the "fulldepth TEI" stations, and constitute approximately half of the stations to be ultimately occupied.

*Figure 1. The proposed 2010 Atlantic GEOTRACES cruise track plotted on dissolved oxygen at 400 m depth. Data from the World Ocean Atlas (Levitus et al., 2005) were plotted using Ocean Data View (courtesy Reiner Schlitzer). [click on the image to view a larger version]*

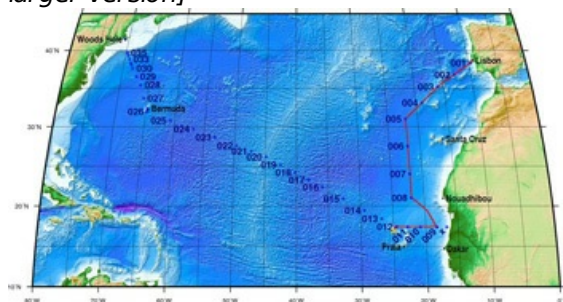


Hydrography, CTD and nutrient measurements will be supported by the Ocean Data Facility (J. Swift) at Scripps Institution of Oceanography and funded through NSF Facilities. They will be providing an additional CTD rosette system along with nephelometer and LADCP. A trace metal clean Go-Flo Rosette and winch system will be provided by the group at Old Dominion University (G. Cutter) along with a towed underway pumping system.

The North Atlantic Transect cruise began in 2010 with KN199 leg 4 (station sampling) and leg 5 (underway sampling only) (Figure 2).

[KN199-04 Cruise Report \(PDF\)](#)

*Figure 2. The red line shows the cruise track for the first leg of the US Geotraces North Atlantic Transect on the R/V Knorr in October 2010. The rest of the stations (beginning with 13) will be completed in October-December 2011 on the R/V Knorr (courtesy of Bill Jenkins, Chief Scientist, GNAT first leg). [click on the image to view a larger version]*

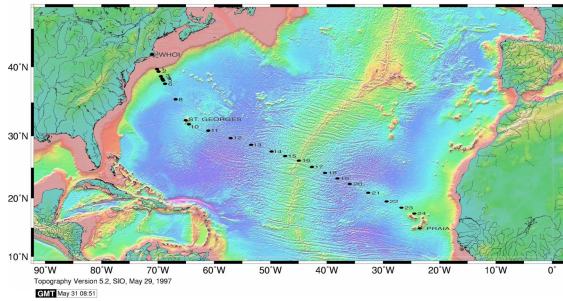


The section completion effort resumed again in November 2011 with KN204-01A,B (Figure 3).

[KN204-01A,B Cruise Report \(PDF\)](#)

*Figure 3. Station locations occupied on the US Geotraces North Atlantic Transect on the R/V Knorr in November 2011. [click on the image to view a larger version]*





Data from the North Atlantic Transect cruises are available under the Datasets heading below, and consensus values for the SAFe and North Atlantic GEOTRACES Reference Seawater Samples are available from the GEOTRACES Program Office: [Standards and Reference Materials](#)

**ADCP data** are available from the Currents ADCP group at the University of Hawaii at the links below:

- [KN199-04](#) (leg 1 of 2010 cruise; Lisbon to Cape Verde)
- [KN199-05](#) (leg 2 of 2010 cruise; Cape Verde to Charleston, NC)
- [KN204-01A](#) (part 1 of 2011 cruise; Woods Hole, MA to Bermuda)
- [KN204-01B](#) (part 2 of 2011 cruise; Bermuda to Cape Verde)

[ [table of contents](#) | [back to top](#) ]

---

## Program Information

### U.S. GEOTRACES (U.S. GEOTRACES)

**Website:** <http://www.geotraces.org/>

**Coverage:** Global

**GEOTRACES** is a [SCOR](#) sponsored program; and funding for program infrastructure development is provided by the [U.S. National Science Foundation](#).

GEOTRACES gained momentum following a special symposium, S02: Biogeochemical cycling of trace elements and isotopes in the ocean and applications to constrain contemporary marine processes (GEOSECS II), at a 2003 Goldschmidt meeting convened in Japan. The GEOSECS II acronym referred to the Geochemical Ocean Section Studies To determine full water column distributions of selected trace elements and isotopes, including their concentration, chemical speciation, and physical form, along a sufficient number of sections in each ocean basin to establish the principal relationships between these distributions and with more traditional hydrographic parameters;

- \* To evaluate the sources, sinks, and internal cycling of these species and thereby characterize more completely the physical, chemical and biological processes regulating their distributions, and the sensitivity of these processes to global change; and

- \* To understand the processes that control the concentrations of geochemical species used for proxies of the past environment, both in the water column and in the substrates that reflect the water column.

GEOTRACES will be global in scope, consisting of ocean sections complemented by regional process studies. Sections and process studies will combine fieldwork, laboratory experiments and modelling. Beyond realizing the scientific objectives identified above, a natural outcome of this work will be to build a community of marine scientists who understand the processes regulating trace element cycles sufficiently well to exploit this knowledge reliably in future interdisciplinary studies.

Expand "Projects" below for information about and data resulting from individual US GEOTRACES research projects.

[ [table of contents](#) | [back to top](#) ]

---

## Funding

Funding Source	Award
<a href="#">NSF Division of Ocean Sciences (NSF OCE)</a>	<a href="#">OCE-0925158</a>

[ [table of contents](#) | [back to top](#) ]