

# Raw counts of macrofauna identified in sediment samples from the Kermadec Trench in the Southwest Pacific, 4000 to ~10,000m from the RV/ Thomas G. Thompson during cruise TN309 (HADES-K), May 2014.

**Website:** <https://www.bco-dmo.org/dataset/763694>

**Data Type:** Cruise Results

**Version:** 1

**Version Date:** 2019-03-18

## Project

» [Controls on Hadal Megafaunal Community Structure: a Systematic Examination of Pressure, Food Supply, and Topography](#) (HADES)

Contributors	Affiliation	Role
<a href="#">Shank, Timothy M.</a>	Woods Hole Oceanographic Institution (WHOI)	Principal Investigator
<a href="#">Drazen, Jeffrey C.</a>	University of Hawaii at Manoa (SOEST)	Co-Principal Investigator
<a href="#">Yancey, Paul</a>	Whitman College	Co-Principal Investigator
<a href="#">Copley, Nancy</a>	Woods Hole Oceanographic Institution (WHOI BCO-DMO)	BCO-DMO Data Manager

## Abstract

This dataset includes raw counts of macrofauna families identified in push core samples taken in the Kermadec Trench in the Southwest Pacific, 4000 to ~10,000m from the RV/ Thomas G. Thompson during cruise TN309 (HADES-K), May 2014.

## Table of Contents

- [Coverage](#)
- [Dataset Description](#)
  - [Methods & Sampling](#)
  - [Data Processing Description](#)
- [Data Files](#)
- [Parameters](#)
- [Instruments](#)
- [Deployments](#)
- [Project Information](#)
- [Funding](#)

## Coverage

**Spatial Extent:** N:-31.9307423 E:-177.290253 S:-35.905159 W:-178.961227

**Temporal Extent:** 2014-05-02 - 2014-05-07

## Dataset Description

This dataset includes raw counts of macrofauna families identified in push core samples taken in the Kermadec Trench in the Southwest Pacific, 4000 to ~10,000m from the RV/ Thomas G. Thompson during cruise TN309 (HADES-K), May 2014.

## Methods & Sampling

Push cores (6.35 cm diameter) of sediment were collected in situ using the manipulator arm of the Hybrid Remotely Operated Vehicle Nereus on the margin of the Kermadec Trench (6013m) and along the main trench

axis (7137 to 9177m) at roughly 1000m increments.

The 0-1, 1-2, 2-3, 3-5, 5-10 cm depth horizons were sectioned for all cores.

Macrofauna (>300 microns) were enumerated and identified to major taxonomic groups (16 total) based on the published morphological descriptions of the taxonomic groups. The data present the total number of individuals in each of these groups in each core.

Attempts were made to obtain 3 replicate cores at each depth horizon (every 1000 meters from 6000m to 10,000m. For logistical reasons with vehicle performance (and loss at 10,000), all of the replicates were not able to be collected.

## Data Processing Description

### BCO-DMO Processing Notes:

- added conventional header with dataset name, PI name, version date
- modified parameter names to conform with BCO-DMO naming conventions
- re-formatted date from m/d/yyyy to yyyy-mm-dd

[ [table of contents](#) | [back to top](#) ]

---

## Data Files

File
<b>Kermadec_macrofauna.csv</b> (Comma Separated Values (.csv), 4.90 KB) MD5:777b1d343f5cb87fb8fbaea05fc4fad1
Primary data file for dataset ID 763694

[ [table of contents](#) | [back to top](#) ]

---

## Parameters

Parameter	Description	Units
USGS_SampleID	USGS sample identifier	unitless
SampleYear	year of sampling	unitless
Station	station identifier	unitless
DateCollected	collection date	unitless
Gear	type of collection gear	unitless
USGS_CoreID	USGS core sample identifier	unitless
Site	site name	unitless
SampleType1	type of sample	unitless
Location	location code	unitless
Fraction	core fraction??	centimeters
SieveSize	sieve mesh size	microns
CoreDiameter	core diameter	centimeters
CoreArea	cross-sectional area of core	centimeters <sup>2</sup>
Latitude	latitude; north is postivie	degrees
Longitude	longitude; east is postivie	degrees
Depth	sample depth below sea surface	meters
NIWA_id	National Institute for Water and Atmosphere (NIWA) sample identifier	unitless
ACROCIRRIDAE	Number of Acrocirridae identified in sample	individuals
AMPHARETIDAE	Number of Ampharetidae identified in sample	individuals
CIRRATULIDAE	Number of Cirratulidae identified in sample	individuals
FLABELLIGERIDAE	Number of Flabelligeridae identified in sample	individuals
NEPHTYIDAE	Number of Nephtyidae identified in sample	individuals
OWENIIDAE	Number of Oweniidae identified in sample	individuals
PARAONIDAE	Number of Paraonidae identified in sample	individuals
SYLLIDAE	Number of Syllidae identified in sample	individuals
TEREBELLIDAE	Number of Terebellidae identified in sample	individuals
Unknown_Polychaete	Number of Unknown polychaete identified in sample	individuals
Naididae	Number of Naididae identified in sample	individuals
Enchytraeidae	Number of Enchytraeidae identified in sample	individuals
BIVALVIA	Number of Bivalvia identified in sample	individuals
SIPUNCULA	Number of Sipuncula identified in sample	individuals
Unknown_Individuals	Number of unidentified individuals in sample	individuals

[ [table of contents](#) | [back to top](#) ]

## Instruments

<b>Dataset-specific Instrument Name</b>	
<b>Generic Instrument Name</b>	HROV Nereus
<b>Generic Instrument Description</b>	Nereus is an efficient, multi-purpose “hybrid” vehicle that can explore and operate in the crushing pressures of the greatest ocean depths. An unmanned vehicle, Nereus operates in two complementary modes. It can swim freely as an autonomous underwater vehicle (AUV) to survey large areas of the depths, map the seafloor, and give scientists a broad overview. When Nereus locates something interesting, the vehicle’s support team can bring the vehicle back on board the ship and transforms it into a remotely operated vehicle (ROV) tethered to the ship via a micro-thin, fiber-optic cable. Through this tether, Nereus can transmit high-quality, real-time video images and receive commands from skilled pilots on the ship to collect samples or conduct experiments with a manipulator arm. Technical specifications: Weight on land: 2,800 kg Payload capacity: 25 kg Maximum speed: 3 knots Batteries: rechargeable lithium ion, 15 kilowatt hours in two pressure housings Thrusters: 2 fore and aft, 2 vertical, 1 lateral (ROV mode) 2 fore and aft, 1 vertical (AUV mode) Lights: variable output LED array, strobes Manipulator arm: Kraft TeleRobotics 7-function hydraulic manipulator Sonar: scanning sonar, forward look and profile, 675 KHz Sensors: magnetometer, CTD (to measure conductivity, temperature, and depth) Nereus supports a variety of science operations: Push coring, measuring heat flow, geotechnical and geochemical sensing, rock sampling and drilling, biological sampling, water sampling, high resolution acoustic bathymetry, and optical still and video imagery. More information is available from the operator site at URL.

<b>Dataset-specific Instrument Name</b>	Leica MZ APO stereo microscopes
<b>Generic Instrument Name</b>	Microscope - Optical
<b>Generic Instrument Description</b>	Instruments that generate enlarged images of samples using the phenomena of reflection and absorption of visible light. Includes conventional and inverted instruments. Also called a "light microscope".

<b>Dataset-specific Instrument Name</b>	
<b>Generic Instrument Name</b>	Push Corer
<b>Dataset-specific Description</b>	Push cores were borrowed from the National Deep Submergence Facility to be able to standardize results. The push cores were 6.35cm diameter).
<b>Generic Instrument Description</b>	Capable of being performed in numerous environments, push coring is just as it sounds. Push coring is simply pushing the core barrel (often an aluminum or polycarbonate tube) into the sediment by hand. A push core is useful in that it causes very little disturbance to the more delicate upper layers of a sub-aqueous sediment. Description obtained from: <a href="http://web.whoi.edu/coastal-group/about/how-we-work/field-methods/coring/">http://web.whoi.edu/coastal-group/about/how-we-work/field-methods/coring/</a>

[ [table of contents](#) | [back to top](#) ]

## Deployments

## TN309

<b>Website</b>	<a href="https://www.bco-dmo.org/deployment/536488">https://www.bco-dmo.org/deployment/536488</a>
<b>Platform</b>	R/V Thomas G. Thompson
<b>Start Date</b>	2014-04-10
<b>End Date</b>	2014-05-20
<b>Description</b>	Original data are available from the NSF R2R data catalog

[ [table of contents](#) | [back to top](#) ]

---

## Project Information

### **Controls on Hadal Megafaunal Community Structure: a Systematic Examination of Pressure, Food Supply, and Topography (HADES)**

**Website:** <http://www.whoi.edu/hades/>

**Coverage:** Kermadec Trench adjacent to New Zealand: approximately 37 12.75 S and 178 51.43 E to 31 51.29 S and 176 49.07 W

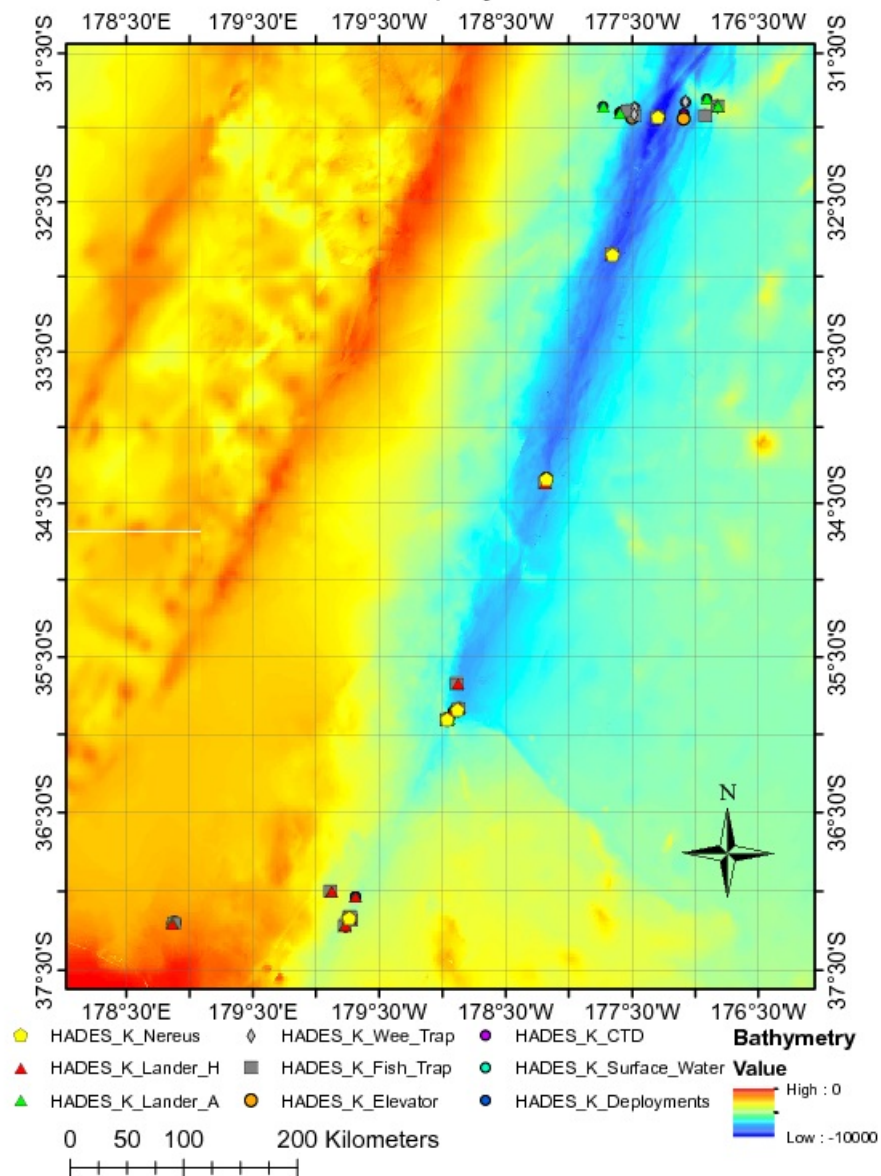
*Extracted from the NSF award abstract:*

Severe technical challenges associated with the extremes of hydrostatic pressure have prevented major advances in hadal ecological studies, and relegated hadal systems to among the most poorly investigated habitats on Earth. Through this project, Hadal Ecosystems Studies (HADES) program, PIs will determine the composition and distribution of hadal species, the role of hadal pressures (piezolyte concentrations, enzyme function under pressure), food supply (distribution of POC with the abundance and biomass of trench organisms, and metabolic rates/energetic demand), and depth/topography (genetic divergence and spatial connectivity of populations) have on impacting deep-ocean community structure. This project will examine these factors using the world's first full-ocean depth hybrid remotely operated vehicle (HROV) in conjunction with the only full-ocean depth imaging lander (Hadal-Lander). This project will provide the first seafloor data and samples in one of the world's best, yet little known trenches- the Kermadec Trench (SW Pacific Ocean).

Megafaunal community structure and the relationship between POC and benthic bacterial biomass will be examined as a function of depth and location by systematic high-definition imaging and sediment/faunal sampling transects from abyssal to full trench depths both along and perpendicular to the trench axis. Population genetic approaches will provide levels of genetic divergence and evolutionarily independent lineages to assess the role of depth and topography in trenches and their adjacent abyssal plain in promoting the formation of species. Physiological constraints will be investigated by examining in-situ respiration of selected fauna and tissue concentrations of such protein stabilizers as trimethylamine oxide (TMAO), and the structural adaptations of macromolecules.

*Image of NEREUS Deployment Sites. [click on the image to view a larger version]*

## HADES-K Deployment sites



[ [table of contents](#) | [back to top](#) ]

## Funding

Funding Source	Award
<a href="#">NSF Division of Ocean Sciences (NSF OCE)</a>	<a href="#">OCE-1131620</a>

[ [table of contents](#) | [back to top](#) ]